

## A new genus and seven new species of pallopterids (Diptera Pallopteridae) from Russia.

### Новый род и семь новых видов двукрылых семейства Pallopteridae (Diptera) из России.

A. L. Ozerov

А. Л. Озеров

Zoological Museum, Moscow Lomonosov State University, Herzen Street 6, Moscow 103009 Russia.

Зоологический музей, Московский государственный университет им. М.В. Ломоносова, ул. Герцена 6, Москва 103009 Россия.

KEY WORDS: Diptera, Pallopteridae, new genus, new species.

КЛЮЧЕВЫЕ СЛОВА: Diptera, Pallopteridae, новый род, новые виды.

**ABSTRACT:** *Gorbunia insularis* gen.n., sp.n., *Temnosira czurkini* sp.n., *Temnosira trichaeta* sp.n. from Kunashir (Kurile Islands) and Sakhalin, *Temnosira nigriscutata* sp.n., *Toxoneura carterosoma* sp.n., *Toxoneura paralia* sp.n. from Primorskiy kray, *Temnosira shataalkini* sp.n. from North Ossetia (Caucasus) are described.

**РЕЗЮМЕ:** В статье описаны *Gorbunia insularis* gen.n., sp.n., *Temnosira czurkini* sp.n., *Temnosira trichaeta* sp.n. с островов Кунашир (Курильские о-ва) и Сахалин, *Temnosira nigriscutata* sp.n., *Toxoneura carterosoma* sp.n., *Toxoneura paralia* sp.n. из Южного Приморья и *Temnosira shataalkini* sp.n. из Северной Осетии.

As a result of the examination of all the specimens of the family Pallopteridae in the collection of Zoological Museum of the Moscow State University (ZMUM) and the part of the specimens from the collection of the Zoological Institute, St. Petersburg (ZIN) I have discovered seven new species, one of which belongs to a new genus. The descriptions of the new taxa are given below. Types of the new species are deposited in Zoological Museum of the Moscow State University, and in the Zoological Institute.

Genus *Gorbunia* n.Type-species: *Gorbunia insularis* sp. n.

**DESCRIPTION.** Head in profile oval: Frons slightly wider than high. Gena moderate. Head with following paired setae: 1 ocellar, 1 orbital, 1 inner vertical, 1 outer vertical, and 1 postocellar. Postgena with 2 black setae. Arista longly pubescent. Scutum microtomentose,

with hairs and following paired setae: 1 postpronotal, 2 notopleurals, 1 supra-alar, 1 intra-alar, 1+1 intrapostalar, and 1+3 dorsocentrals. Anterior margin of scutum between postpronotum greatly convex. Proepisternum, proepimeron, katatergite tomentose. Anepisternum, katepisternum, meron, katepimeron, metepimeron, anatergite, scutellum and subscutellum microtomentose. Proepimeron with several long hairs. Prosternum and anepisternum on posterior half with hairs. Katepisternum with hairs and one strong black seta on upper margin. Mediotergite shining. Scutellum with 4 strong equal setae. Mid femur with anterior seta in apical half. Width of wing on line of crossvein bm-cu distinctly less than width of wing on line of crossvein dm-cu.

**DIAGNOSIS.** Anterior margin of the scutum greatly convex between postpronotum is unique for *Gorbunia*. Palaearctic genera of Pallopteridae may be distinguished as follows:

1. Costa spinose. Katepisternum with 4 strong dorsal setae ..... *Eurygnathomyia* Czerny
- Costa not spinose. Katepisternum with 1 strong seta ..... 2
2. Anepisternum bare ..... *Palloptera* Fallen
- Anepisternum tomentose or / and with hairs, or / and setulae, or / and setae ..... 3
3. Mediotergite shining or microtomentose, without pollen ..... 4
- Mediotergite pruinose, sometimes near abdomen with narrow shining blend ..... *Toxoneura* Macquart
4. Anterior margin of scutum between postpronotum greatly convex. Mid femur with a strong black seta in apical third ..... *Gorbunia* gen.n.
- Anterior margin of scutum between postpronotum not convex. Mid femur without seta on anterior surface ..... *Temnosira* Enderlein

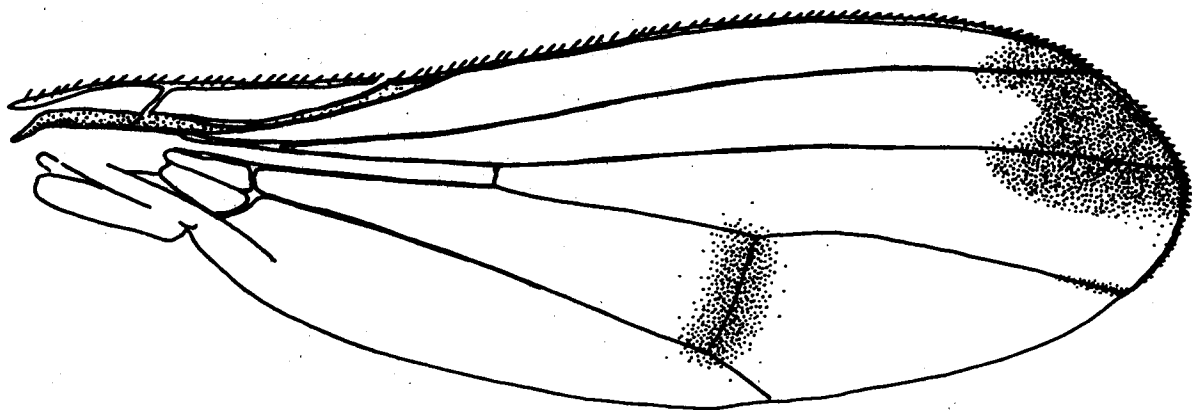


Fig. 1. Wing of *Gorbunia insularis* gen.n., sp.n.

Рис. 1. Крыло *Gorbunia insularis* gen.n., sp.n.

**DISTRIBUTION.** One species, Sakhalin and Kurile Islands, described below.

*Gorbunia insularis* sp.n.

Fig. 1.

**MATERIAL.** Holotype: ♂, «Курильские о-ва, Третьяково, о. Кунашир, 5.VII.1968, Нарчук» [Kurile Isl., Kunashir, Tret'yakovo, 5.VII.1968, Nartshuk], (ZIN). Paratypes: ♂, same locality, 7.VIII.1971, Nartshuk, (ZMUM); ♂, Sakhalin, Pravda, 12 km S Kholmsk, 25.VII.1971, Nartshuk, (ZIN); ♀, Sakhalin, Yuzhno-Sakhalinsk, near Chekhov, 8.VIII.1985, S. Czurkin, (ZMUM).

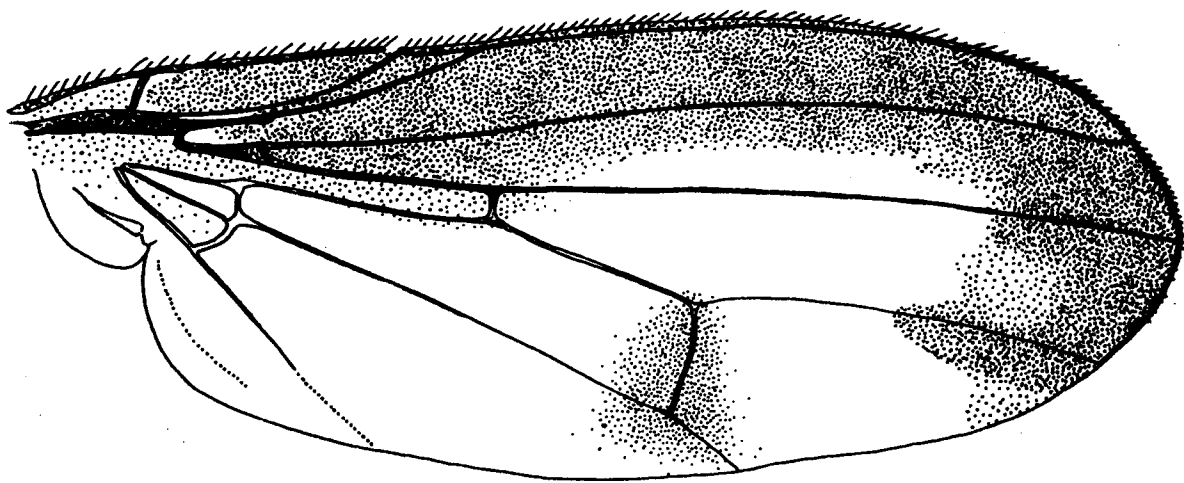
**DESCRIPTION. MALE, FEMALE.** Head in profile oval. Frons yellow, matt, but along eye between orbital and inner vertical setae black, tomentose. Width of frons slightly more than height. Ocellar triangle black, microtomentose, with small hairs. Face yellow, subshining. Gena and subgena yellow. Genal height approximately 5.5 times less than vertical diameter of eye. Gena with a row of thin setae. Median occipital sclerite black, microtomentose. Occiput black, on lower half anteriorly yellow. Surface of occiput microtomentose, with black and yellow hairs, only along eye on upper half shining. Postgena microtomentose, dark brown, only near gena and under occiput foramen yellow. Head with following paired setae: 1 ocellar, 1 orbital, 1 inner vertical, 1 outer vertical, and 1 postocellar. Postgena with 2 black setae. Antenna yellow. First flagellomere approximately 1.5 times as long as wide, slightly narrowed apically. Arista black, longly pubescent. Labrum and palpus dark brown. Palpus stick-like, laterally flattened, not reaching anterior margin of labrum.

Thorax black. Scutum microtomentose, with

yellowish hairs and following paired setae: 1 postpronotal, 2 notopleurals, 1 supra-alar, 1 intra-alar, 1+1 intrapostalar, and 1+3 dorsocentrals. Microtomentum of scutum form the picture of wide and narrow longitudinal stripes and spots. Anterior margin of scutum between postpronotum greatly convex. Proepisternum, proepimeron, and katatergite tomentose. Anepisternum, katepisternum, meron, katepimeron, metepimeron, and anatergite microtomentose, but upper anterior corner of katepisternum shining. Proepimeron with 3-4 long pale yellow hairs. Prosternum yellow to brownish-yellow, with hairs. Anepisternum on posterior half with whitish hairs. Katepisternum with hairs, which long on lower part, and strong black seta on upper margin. Mediotergite black, shining. Scutellum and subscutellum black, microtomentose. Scutellum with 4 strong equal setae.

Legs yellow, with numerous yellow hairs. Basal third of mid tibia and basal half of hind tibia brownish-yellow. Fore femur with a row of 5-6 thin setae between posterior and posterodorsal surfaces, with a row of 3-4 posteroventral setae in apical third, and with yellow long posteroventral seta near base. Mid femur with anterior seta in apical half. Mid tibia with strong ventral seta at apex. Hind femur with anterodorsal seta on apical quarter and long yellow ventral seta near base.

Wing (Fig. 1) tinged with yellow. Surface of wing with border around of crossvein dm-cu, with blent dark spots at apexes of  $R_{2+3}$  and  $R_{4+5}$ , and with small spot at apex of M. Veins yellowish. Width of wing on line of crossvein bm-cu distinctly less than width of wing on line of crossvein dm-cu. Vein  $A_1+CuA_2$  ending far before wing margin. Alula narrow, about 4 times as long as wide. Upper and lower calypters, their margins and halter yellowish.

Fig. 2. Wing of *Temnosira czurkini* sp.n.Рис. 2. Крыло *Temnosira czurkini* sp.n.

Abdomen black, shining, with blackish hairs. Width of abdomen slightly more than width of scutellum. Tergite 5 of female with 2-3 lateral marginal setae. Tergite 6 of female with a row of marginal setae. Epandrium microtomentose. Length of body: 4.5-7.0 mm. Length of wing: 4.7-5.8 mm.

*Temnosira czurkini* sp.n.

Fig. 2.

**MATERIAL.** Holotype: ♂, «о.Кунашир, Третьяково, 21.VII.1985, Чуркин С.» [Kurile Isls., Kunashir, Tret'yakovo, 21.VII.1985, S. Czurkin], (ZMUM). Paratypes: 1 ♂, 3 ♀, same locality, 21-26.VII.1985, S. Czurkin, (ZMUM).

**DESCRIPTION. MALE, FEMALE.** Head in profile oval. Frons yellow, matt, with rare black hairs. Width of frons slightly more than height. Ocellar triangle yellow to black, subshining, with black hairs. Vertex yellow, microtomentose. Face, gena, and subgena pale yellow, white pruinose. Gena with a row of thin setulae. Genal height 8 times less than vertical diameter of eye. Postcranium microtomentose. Median occipital sclerite black, only on upper part yellow. Upper third of occiput black, with black setulae. Lower 2/3 of occiput yellow, with black and yellow setulae. Head with following paired setae: 1 ocellar, 1 orbital, 1 inner vertical, 1 outer vertical, and 1 small postocellar. Postgena yellow with yellowish hairs and 2 thin black setae. Antenna reddish-yellow. First flagellomere approximately 1.7 times as long as wide, microtomentose, apex evenly rounded. Arista black, with yellow or reddish-yellow base, shortly pubescent. Labrum pale yellow. Palpus yellow or pale yellow, stick-like, laterally flattened, not reaching anterior margin of labrum.

Thorax yellow, only scutum with two black longitudinal stripes laterally of line dc, and mediotergite black, with yellow longitudinal stripe in centre. Scutum shining, with hairs and following paired setae: 1 postpronotal, 2 notopleurals, 1 supra-alar, 1 intra-alar, 1+1 intrapostalar, and 1+3 dorsocentrals (only posterior pair strong). Pleural lateral sclerites subshining, microtomentose. Prosternum tomentose, with several long hairs. Proepimeron with 1-2 long pale yellow hairs. Anepisternum on posterior part with yellow and black hairs and strong black seta on posterior margin. Katepisternum with yellow and black hairs, which very long on lower part, and strong black seta on upper margin. Mediotergite shining. Scutellum yellow, microtomentose, with 4 strong equal setae. Subscutellum microtomentose.

Legs pale yellow or yellow, with hairs. Fore femur with a row of 5-6 setae between posterior and posterodorsal surfaces, with 3-4 posteroventral setae on apical half, and with ventral seta near base. Mid femur with anterior seta in apical third. Mid tibia with strong ventral seta at apex. Hind femur with a dorsal and an anterodorsal setae on apical quarter.

Wing (Fig. 2) with broad dark brown stripe along costal margin until M, with dark brown border around of crossvein dm-cu. Veins black and yellow. Width of wing on line of crossvein bm-cu slightly less than that on line of crossvein dm-cu. Vein A<sub>1</sub>+CuA<sub>1</sub>, reaching wing margin as fold. Upper and lower calypters, their margins and halter pale yellow.

Abdomen shining, with yellow hairs, which in male longer than in female. Tergites yellow to

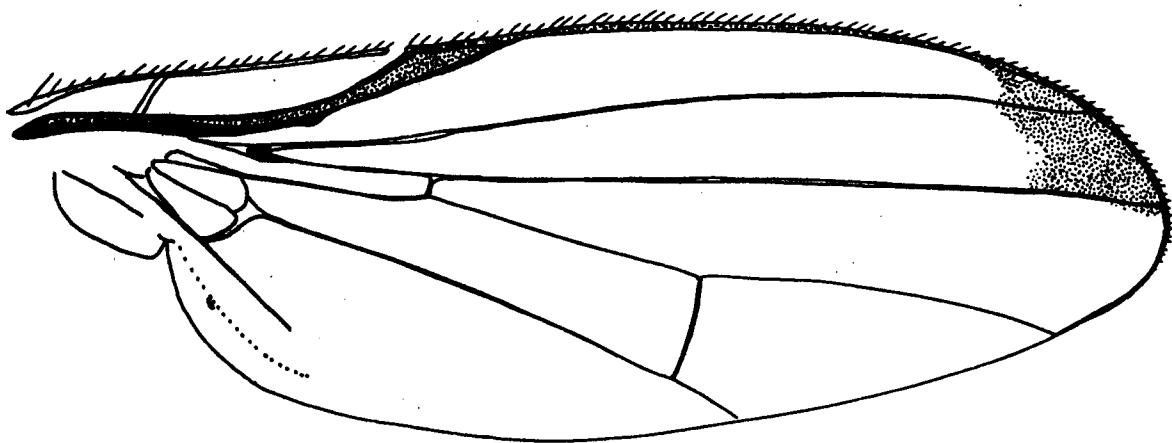


Fig. 3. Wing of *Temnosira nigriscutata* sp.n.

Рис. 3. Крыло *Temnosira nigriscutata* sp.n.

brownish-yellow; epandrium yellow; ovipositor dark brown. Tergite 5 of male with a row of marginal setae. Tergite 6 of female with 1-2 lateral marginal setae.

Length of body: 4.3-5.0 mm. Length of wing: 4.5-5.2 mm.

**DIAGNOSIS.** Resembling *T.orientana* (Kovalev), but differing as follows: wing with broad dark brown stripe along costal margin; anepisternum yellow, microtomentose, with strong black seta near posterior margin. *T.orientana* has anterior margin of wing only with dark spot at apex; anepisternum yellow, with black longitudinal stripe in centre, without microtomentum and strong black seta near posterior margin.

**DISTRIBUTION.** Kurile Islands: Kunashir.

*Temnosira nigriscutata* sp.n.

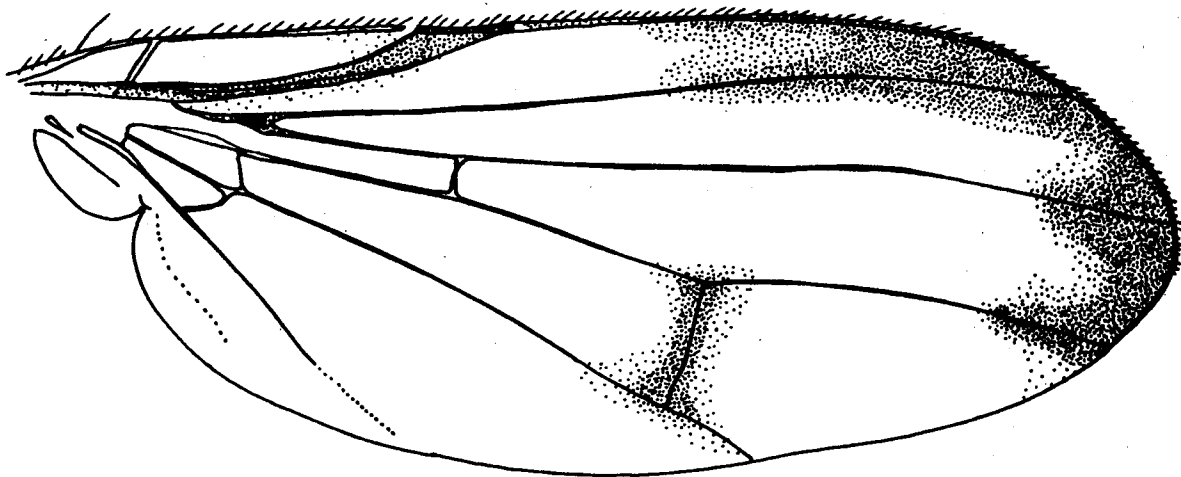
Fig.3.

**MATERIAL.** Holotype: ♀, «Ю. Приморье, Каменушка, 2.VII.1988, А. Шаталкин» [Primorye Prov., Kamenushka, 40 km SE Ussuriysk, 2.VII.1988, A. Shatalkin], (ZMUM). Paratype: ♂, Vladivostok, Okeanskaya, 22.VII.1963, Kerzner; on *Tilia amurensis*, (ZIN).

**DESCRIPTION.** Head in profile oval. Frons reddish-yellow, matt, in female along eye between orbital and inner vertical setae black, white microtomentose. Height of frons more than width. Ocellar triangle black, shining, with hairs. Face, gena, and subgena pale yellow, white pruinose. Genal height approximately 8 times less than vertical diameter of eye. Gena with a row of brown setae. Postcranium white microtomentose. Median occipital sclerite black, only on upper part yellow. Upper half of occiput black, with black setulae. Lower half of

occiput yellow, with long yellow hairs and setulae. Head with following paired setae: 1 ocellar, 1 orbital, 1 inner vertical, 1 outer vertical, and 1 small postocellar. Postgena yellow, with long yellow hairs and 2 thin yellow setae. Antenna reddish-yellow or yellow, only flagellomere 1 anteriorly and laterally slightly darkened. First flagellomere roundish. Arista black, shortly pubescent. Labrum pale yellow. Palpus black, stick-like, laterally flattened, ending far before anterior margin of labrum.

Scutum mostly black, shining, with black and yellow hairs and following paired setae: 1 postpronotal, 2 notopleurals, 1 supra-alar, 1 intra-alar, 1 intrapostalar, and 1+3 dorsocentrals. Postpronotum, notopleuron, surface of scutum behind postpronotum to transverse suture, postalar callus, and postalar wall brownish-yellow. Prosternum tomentose, with several long hairs. Proepisternum subshining, microtomentose, with strong black seta. Proepimeron shining, microtomentose on anterior half, with strong black seta. Anepisternum, katepisternum, and anepimeron shining. Male lateral pleural sclerites yellow. In female: anepisternum on anterior half yellow, on posterior half blackish or brownish; katepisternum brownish, only on margins yellow; katepimeron, meron, and metepisternum yellow; katatergite, anepimeron, and anatergite brownish-yellow; meron black or dark brown, on margins often yellow. Anepisternum in posterior upper corner rare tomentose, with several hairs, and with strong black seta on posterior margin. Katepisternum with rare yellowish hairs on anterior and posterior margins, with strong black seta on upper margin. Hairs very long on lower part of katepisternum. Anepimeron without hairs or tomentum. Katepimeron, meron, and metepisternum microtomentose. Katatergite

Fig. 4. Wing of *Temnosira shatalkini* sp.n.Рис. 4. Крыло *Temnosira shatalkini* sp.n.

tomentose. Anatergite microtomentose on half bordering with katatergite. Mediotergite black, shining. Scutellum black, shining, with 4 strong equal setae. Subscutellum shining.

Legs pale yellow. Male's mid and hind legs absent. Fore femur with a row of 8 thin setae between posterior and posterodorsal surfaces, with a row of 5-6 posteroventral setae on apical half, with thin pale yellow posteroventral seta near base. Mid tibia with strong ventral seta at apex. Hind femur with a dorsal and an anterodorsal setae on apical quarter.

Wing (Fig. 3) with dark spot at apex upper of  $R_{4+5}$ . Subcostal cell dark brown. Veins brown. Width of wing on line of crossvein  $bm-cu$  approximately equal width of wing on line of crossvein  $dm-cu$ . Vein  $A_1 + CuA_2$  ending far before wing margin. Upper and lower calypters, their margins and halter pale yellow.

Abdomen yellow to dark yellow, shining, with yellowish and black seta-like hairs. Tergite 5 of male with a row thin marginal setae.

Length of body: 4.6 mm. Length of wing: 4.4 mm.

MALE unknown.

**DIAGNOSIS.** Resembling *T. saltuum* (L.), but differing as follows: wing only with dark brown spot at apex; postcranium microtomentose; scutum mostly black in both sexes; scutellum black. *T. saltuum* (L.) has wing with narrow dark brown strip along costal margin, besides of spot at apex; postcranium without microtomentum; scutum of female mostly black, scutum of male yellow; scutellum yellow.

**DISTRIBUTION.** Primorye Province.

*Temnosira shatalkini* sp.n.

Fig. 4.

**MATERIAL.** Holotype: ♂, «Сев. Осетия, Цей, 6.VII.1990, А. Шаталкин» [N-Ossetia, Tzey, 6.VII.1990, A. Shatalkin], (ZMUM). Paratypes: 4 ♂, 4 ♀, same locality, 25.IX.1989 and 4-7.VII.1990, A. Shatalkin, (ZMUM).

**DESCRIPTION.** Head in profile oval. Frons reddish-yellow, matt, only along eye between orbital and inner vertical setae black, microtomentose. Width of frons approximately equal height. Ocellar triangle black, shining, with hairs. Face, gena, and subgena yellow to red- or brown-yellow. Face whitish pruinose. Genal height approximately 8 times less than vertical diameter of eye. Gena with a row of yellow thin setulae. Postcranium microtomentose. Median occipital sclerite and upper half of occiput black, with blackish setulae. Sometimes upper part of median occipital sclerite yellowish-brown. Lower half of occiput yellow, with yellow setulae. Head with following paired setae: 1 ocellar, 1 orbital, 1 inner vertical, 1 outer vertical, and 1 small postocellar. Postgena yellow, with 2 thin black setae. Antenna reddish-yellow, flagellomere 1 reddish- to brownish-yellow. First flagellomere approximately 1.5 times as long as wide, apex evenly rounded. Arista black, short pubescent. Labrum reddish-brown. Palpus reddish-yellow, stick-like, laterally flattened, reaching anterior margin of labrum.

Scutum mostly black, shining, with yellow hairs. Hairs in male longer than in female. Scutum with following paired setae: 1 postpronotal, 2 notopleurals, 1 supra-alar, 1 intra-alar, 1 intrapostalar, and 1+3 dorsocentrals (posterior pair strong only). Postpronotum, notopleuron, surface of scutum be-

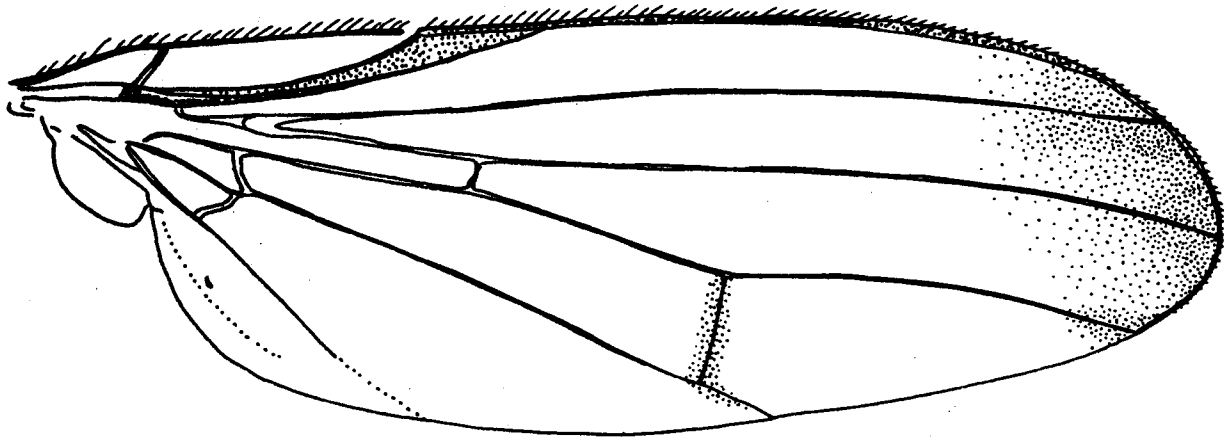


Fig. 5. Wing of *Temnosira trichaeta* sp.n.

Рис. 5. Крыло *Temnosira trichaeta* sp.n.

hind postpronotum to transverse suture, postalar callus, postalar wall, prosternum, proepisternum, and proepimeron yellow. Prosternum with yellow hairs. Proepisternum subshining, tomentose. Proepimeron shining, microtomentose, with several yellow hairs. Anepisternum and katapisternum shining. Anepisternum black in centre, on anterior and posterior margins yellow or brownish-yellow. Posterior 2/3 of anepisternum with yellowish hairs. Katapisternum black, only posterior upper corner yellow or brownish, mostly microtomentose, with strong black seta on upper margin. Anepimeron brown, shining, on posterior half microtomentose. Katapimeron, katatergite, and metepisternum yellow. Meron black or dark brown, their margins often yellow. Anatergite dark brown. Mediotergite black, shining. Katapimeron, meron, anatergite, and metepisternum microtomentose. Katatergite tomentose. Scutellum yellow, subshining, tomentose, with 4 strong equal setae. Subscutellum microtomentose.

Legs yellow. Fore femur with an anterior and a ventral setae near base, with 1-2 posteroventral setae on apical quarter. Mid tibia with strong ventral seta at apex. Hind femur with a dorsal and an anterodorsal seta on apical quarter.

Wing (Fig. 4) tinged with brown, with dark stripe along costal margin between middle of wing and  $R_{4+5}$ , with dark border around of crossvein dm-cu, with dark spots around apexes of  $R_{4+5}$  and M. Subcostal cell dark brown or black. Veins brown or dark brown. Width of wing on line of crossvein bm-cu equal or more than width of wing on line of crossvein dm-cu. Vein  $A_1 + CuA_2$  reaching wing margin as fold. Upper and lower calypters, their margins and halter yellow.

Abdomen shining, with yellowish hairs. Syntergite 1+2 on basal half yellow, on apical half black. Tergite 3 and 4 black, the others yellow, but sometimes tergite 5 and 6 of female completely or partly black.

Length of body: 3.3-4.2 mm. Length of wing: 4.2-5.6 mm.

DIAGNOSIS. Resembling *T. ambusta* (Mg.), but may be distinguished as follows: scutum mostly black; anepisternum, katapisternum, proepimeron, and meron completely black. *T. ambusta* (Mg.) has scutum reddish, with black drawing; anepisternum, katapisternum, proepimeron, and meron reddish.

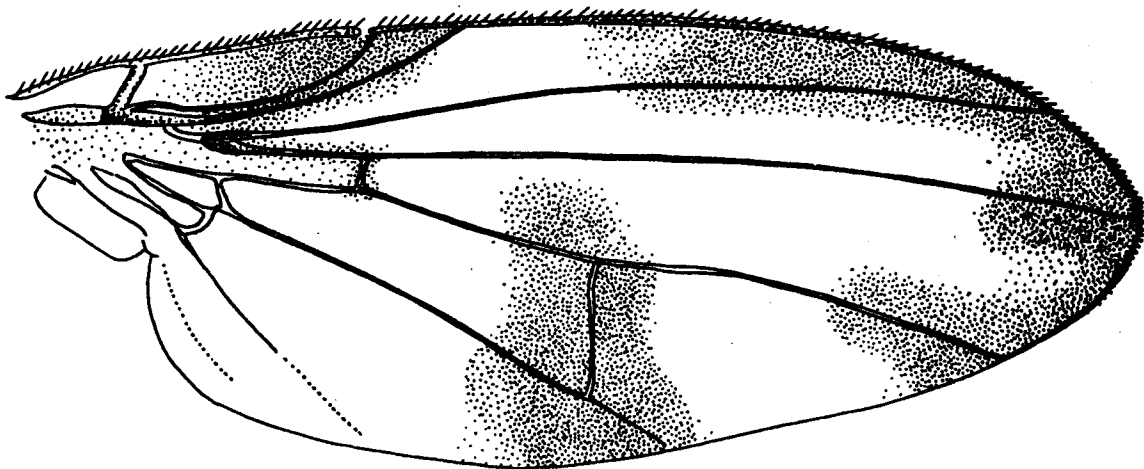
DISTRIBUTION. Caucasus: North Ossetia.

*Temnosira trichaeta* sp.n.

Fig. 5.

MATERIAL. Holotype: ♂, «о. Кунашир, окр. вулк. Менделеева, 31.VII.1985, Чуркин С.» [Kurile Isls., Kunashir, near Mendeleyev Volcano, 31.VII.1985, S. Czurkin], (ZMUM). Paratypes: ♂, same locality; 2 ♂, 1 ♀, Kunashir, Tret'yakovo, 21.VII.1985, S. Czurkin, (ZMUM), ♂, «Saghalien, 27.IX.1932, M.Hori», (ZIN).

DESCRIPTION. MALE, FEMALE. Head in profile oval. Frons yellow or reddish-yellow, matt, but along eye between orbital and inner vertical setae microtomentose. Width of frons slightly more than height. Ocellar triangle black, microtomentose, with small hairs. Face, gena, and subgena pale yellow. Face subshining. Gena white pruinose, with a row of thin setulae. Genal height 5-6 times less than vertical diameter of eye. Postcranium microtomentose. Median occipital sclerite black, only on upper part yellow. Upper third of occiput black, with black setulae. Lower 2/3 of occiput yellow, with black and yellow setulae. Head with following paired

Fig. 6. Wing of *Toxoneura carterosoma* sp.n.Рис. 6. Крыло *Toxoneura carterosoma* sp.n.

setae: 1 ocellar, 1 orbital, 1 inner vertical, 1 outer vertical, and 1 small postocellar. Postgena pale yellow, with yellow hairs and 2 setae: black and yellow. Antenna yellow. First flagellomere approximately 1.7 times as long as wide, apex evenly rounded. Arista black, with yellowish base, longly pubescent. Labrum pale yellow, subshining. Palpus yellow, stick-like, laterally flattened, not reaching anterior margin of labrum.

Thorax yellow, excluding scutum, anepimeron, anatergite, and mediotergite, which blackish or with black spots. Scutum shining, with eight black spots, tomentose along border of pleural lateral sclerites and near scutellum, with rare yellowish hairs, and with following paired setae: 1 postpronotal, 2 notopleurals, 1 supra-alar, 1 intra-alar, 1 intrapostalar, 1+2 dorsocentrals. Prosternum with long hairs. Proepisternum and proepimeron subshining, tomentose and microtomentose. Proepimeron with several long yellow hairs. Anepisternum shining, black in centre, on anterior and posterior margins yellow or brownish-yellow. Posterior half of anepisternum with yellowish hairs. Katepisternum subshining, tomentose and microtomentose, with yellowish hairs, which very long on lower part, with strong black seta on upper margin. Anepimeron, katepimeron, meron, and metepisternum microtomentose. Katatergite tomentose. Anatergite brownish on lower part, subshining, microtomentose. Mediotergite microtomentose, black completely or with yellow spot in centre. Scutellum yellow, tomentose, with yellow hairs and 4 strong equal setae. Subscutellum black, microtomentose.

Legs pale yellow, with numerous hairs. Fore and

hind femora blackish in centre. Fore femur with 2-3 posterodorsal setae on apical half, with 1-2 posteroventral setae, with a black posterior and an yellow ventral setae near base. Mid tibia with strong ventral seta at apex. Hind femur with a dorsal and an anterodorsal setae on apical quarter.

Wing (Fig. 5) with narrow pale brown border around of crossvein dm-cu and dark spot at apex. Subcostal cell dark brown or black. Veins brown. Width of wing on line of crossvein bm-cu approximately equal than width of wing on line of crossvein dm-cu. Vein  $A_1 + CuA_2$  reaching wing margin as fold. Upper and lower calypters, their margins and halter pale yellow.

Abdomen shining, with yellow hairs. Syntergite 1+2 yellow or brownish-yellow. Tergite 3 and 4 brownish-black. In male the other tergites and epandrium yellow. In female tergite 5 and 6 yellow or brownish-yellow, ovipositor brownish-black. Tergites 4-5 of male and tergites 4-7 of female with a row of thin marginal setae.

Length of body: 4.3-5.3 mm. Length of wing: 5.0-5.7 mm.

DIAGNOSIS. Specimens of *T. trichaeta* may be distinguished from the other palaearctic species of *Temnosira* by three pairs (1+2) of the dorsocentral setae.

DISTRIBUTION. Kurile Islands: Kunashir.

*Toxoneura carterosoma* sp.n.

Fig. 6.

MATERIAL. Holotype: ♀, «Юж. Приморье, Кедровая Падь, 30.VIII.1980, А. Шатакин» [Primorye Prov., Kedrovaya Pad Reserve, 30.VIII.1980, A. Shatalkin],

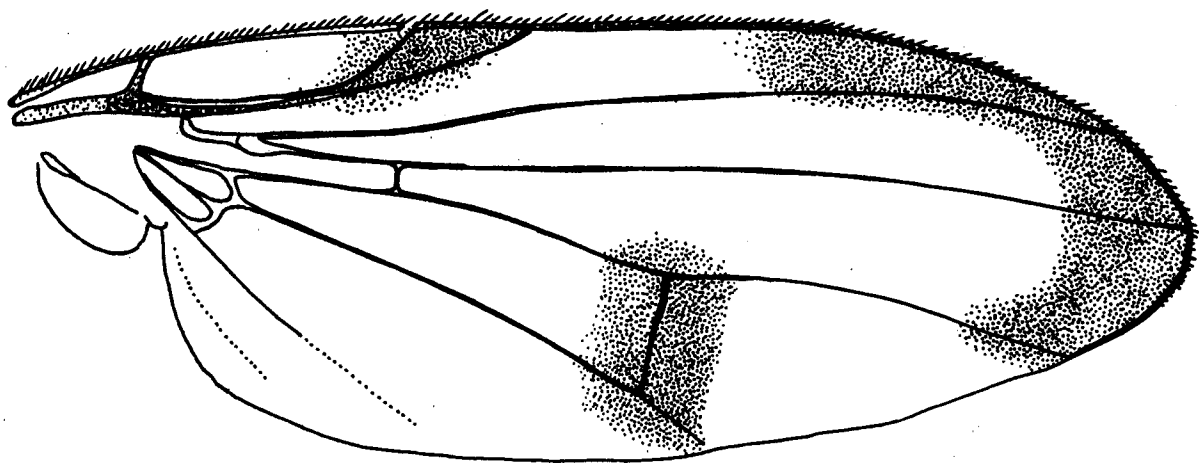


Fig. 7. Wing of *Taxoneura paralla* sp.n.

Рис. 7. Крыло *Taxoneura paralla* sp.n.

(ZMUM). Paratypes: 2 ♀, same locality, 30.VIII. and 21.IX.1980, A. Shatalkin, (ZMUM).

**DESCRIPTION.** Head in profile oval. Frons greyish pruinose, with black hairs, yellow, but on upper part darkened, along eye between orbital and inner vertical setae blackish. Wight of frons 1.4 times as long as height. Ocellar triangle black, greish pruinose. Face, gena, and subgena whitish or pale yellow, white pruinose. Gena with a row of thin setae. Genal height approximately 7 times less than vertical diameter of eye. Postcranium grey pruinose, black, only lower third of occiput and postgena brownish. Occiput with black setulae and hairs. Head with following paired setae: 1 ocellar, 1 orbital, 1 inner vertical, 1 outer vertical, and 1 small postocellar. Postgena with black setulae and one strong seta. Antenna reddish-yellow, only flagellomere 1 anteriorly and laterally slightly darkened. First flagellomere approximately 1.5 times as long as wide, slightly narrowed apically. Arista black, with reddish-yellow base, very shortly pubescent. Labrum pale yellow. Palpus pale yellow or yellow, stick-like, laterally flattened, reaching anterior margin of labrum.

Thorax brownish, grey pruinose. Scutum with black hairs and following paired setae: 1 postpronotal, 2 notopleurals, 1 supra-alar, 1 intra-alar, 1+1 intrapostalars, and 1+3 dorsocentrals. Anepisternum on posterior half with short black setulae. Katapisternum black, with pale yellow setulae, which very long on posterior part, with strong black seta on upper margin. Katatergite brownish-yellow, microtomentose. Scutellum brown, grey pruinose, with 4 strong equal setae. Subscutellum greish pruinose.

Legs pale yellow. Fore femur with a row of 5-6

thin setae between on posterior and posterodorsal surfaces, with a row of 5-6 posteroventral setae on apical half, with thin pale yellow ventral seta near base. Mid femur with anterior seta in apical third. Mid tibia with strong ventral seta at apex. Hind femur with a dorsal and an anterodorsal setae on apical quarter.

Wing (Fig. 6) with dark stripe along costal margin, but break in middle, with pale and narrow dark border around of crossvein r-m, with broad dark border around of crossvein dm-cu, with blent dark spots around apexes of  $R_{4+5}$  and M. Veins brown or dark brown. Width of wing on line of crossvein bm-cu equal or slightly less than width of wing on line of crossvein dm-cu. Vein  $A_1 + CuA_2$  reaching wing margin as fold. Upper and lower calypters, their margins and halter pale yellow.

Abdomen yellowish-brown, weakly greish pruinose, with black hairs. Tergites 2-6 with a row of marginal setae.

Length of body: 4.5-5.5 mm. Length of wing: 5.5-6.0 mm.

**DIAGNOSIS.** Resembling *T. modesta* (Mg.), but differing as follows: proepimeron and proepisternum without black seta or setula; lower part of frons and parafacial laterally of antenna whitish pruinose; thorax brownish, weakly greyish pruinose; first flagellomere 1.5 times as long as wide; basal costal cell almost completely darkened. *T. modesta* (Mg.) has proepimeron and proepisternum with a black seta or setula on each; lower part of frons and parafacial laterally of antenna mat, without pollen; thorax black, with thick grey pollen; first flagellomere almost round; basal costal cell not darkened.

**DISTRIBUTION.** Primorye Province.



*Toxoneura paralia* sp.n.

Fig. 7.

**MATERIAL.** Holotype: ♀, «Спутинский заповед. Приморского края, 9.X.1958, Зинovieв» на стволе усохш. кедр» [Primorye Prov., Ussuriyskiy (formerly Suputinskiy) Reserve, 9.X.1958, Zinovjev, on the dried trunk of korean pine]; (ZIN). Paratypes: ♀, same locality, 12.X.1958, Zinovjev, on the dried of fir-tree; (ZMUM).

**DESCRIPTION. FEMALE.** Head in profile oval. Frons on lower part red-yellow and matt, on upper part (approximately 2/3 of frons) brown and weak whitish pruinose, but along eye between orbital and inner vertical setae black and grey pruinose; lower half of frons with black hairs. Wight of frons 1.6 times long height. Ocellar triangle black, greyish pruinose. Face, gena, and subgena red-yellow, golden pruinose. Gena with a row of thin setae. Genal height approximately 4.5 times less than vertical diameter of eye. Postcranium grey pruinose, brownish-black, only on lower quarter yellowish. Head with following paired setae: 1 ocellar, 1 orbital, 1 inner vertical, 1 outer vertical, and 1 postocellar. Postgena with one strong seta. Antenna red-yellow, only flagellomere 1 anteriorly slightly darkened. First flagellomere approximately 1.4 times as long as wide, slightly narrowed apically. Arista black, with reddish-yellow base, very shortly pubescent. Labrum reddish-yellow. Palpus reddish-yellow, stick-like, laterally flattened, not reaching anterior margin of labrum.

Thorax brownish-black, grey pruinose. Scutum with black hairs and following paired setae: 1 postpronotal, 2 notopleurals, 1 supra-alar, 1 intra-alar, 1+1 intrapostalar, and 1+3 dorsocentrals. Anepisternum on posterior half with black hairs and

setulae, with strong black seta on posterior margin. Katepisternum black, with blackish setulae, which very long on posterior part, with strong black seta on upper margin. Katatergite microtomentose. Scutellum brownish-black, grey pruinose, with 4 strong equal setae. Subscutellum grey pruinose.

Legs yellow, only last tarsomere of all legs dark brown. Fore femur with a row of 5-6 thin setae between posterior and posteroventral surfaces, with a row of 5-6 posteroventral seta on apical half, with thin ventral seta near base. Mid femur with anterior seta in apical third. Mid tibia with strong ventral seta at apex. Hind femur with a dorsal seta and an anterodorsal setae on apical quarter.

Wing (Fig. 7) with dark stripe along costal margin, but break in middle, with broad dark border around of crossvein dm-cu, with blent dark spots around apexes of  $R_{4+5}$  and M. Basal cell almost completely dark brown. Veins brown or dark brown. Width of wing on line of crossvein bm-cu equal or slightly less than width of wing on line of crossvein dm-cu. Vein  $A_1 + CuA_1$  reaching wing margin as fold. Upper and lower calypters, their margins and halter pale yellow.

Abdomen brownish-black, weakly greyish pruinose, with black hairs. Tergites 2-6 with a row of marginal setae.

Length of body: 4.5-5.0 mm. Length of wing: 5.1 mm.

**MALE** unknown.

**DIAGNOSIS.** Resembling the previous species, but differing from it as follows: posterior third of frons matt, anepisternum with strong black seta on posterior margin.

**DISTRIBUTION.** Primorye Province.